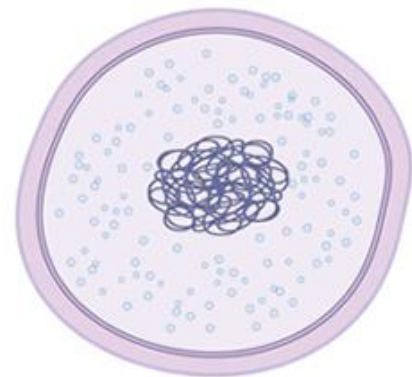


Cell A.



Cell B.

1. Name as many differences as you can find between the two cells.

A.	B.

2. Of the two cells, which one do you think can perform more activities? Explain your answer.

3. Which of the two cells do you think was the first to appear on Earth? Explain your answer.

4. If the prefix *eu-* means true and the prefix *pro-* means prior to, which cell is a prokaryote and which cell is a eukaryote?